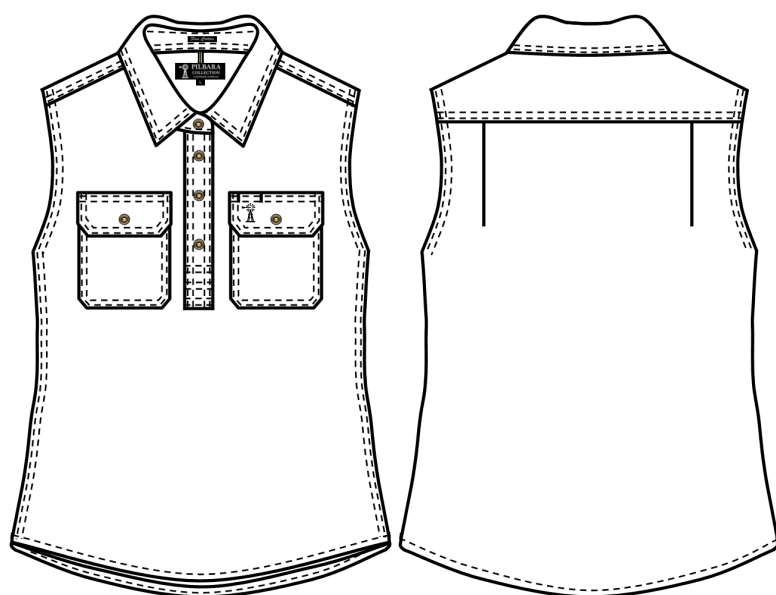


**Light Weight Shirt – Silicon Wash**

**COMMERCIAL IN CONFIDENCE**

**RM900CF Pilbara Ladies Closed Front Sleeveless Shirt**



**Features**

- Superior Garment Assembly, Twin Needle Stitching and Bar-tacks for Extra Strength
- Garment Wash with Silicon Wash

**Fabric**

Cotton Twill, 150gsm Light Weight

**Size Range**

6- 24

Dimension Stability		+/-3%
Colour Fastness to Washing	Colour Change	4
	Colour Staining	4-5
Colour Fastness to Rubbing	Dry	3-4
	Wet	2-3
Colour Fastness to Light		4-5
Tearing Strength	Warp	>=15 min N
	Weft	>=12 min N



**Blush**



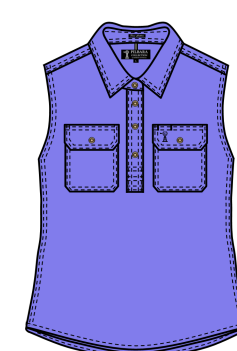
**Cornflower**



**French Navy**



**Jade**



**Lavender**

<b>Measurement Table</b>	6	8	10	12	14	16	18	20		
1/2 Chest	45.5	48	52	54.5	57	61	65	69		
Centre Back Length	71	72	73	75	77	79	80	81		
Shoulder Width	40	41	42	43	44.5	46	47.5	49		
Pocket Dimension	Width 12 x Depth 14cm									